

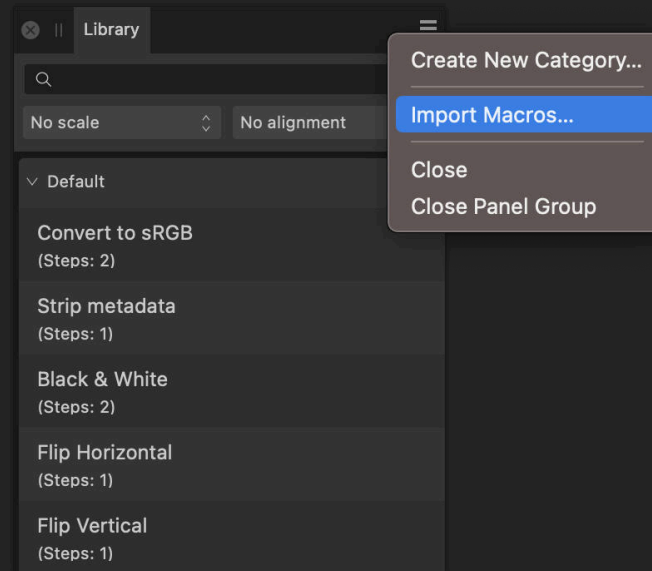
# JR Macros: Trim Functions

# Introduction

This macro pack is designed to emulate the **Trim** functionality found in Photoshop and other image editing software, but it also takes the feature further and provides several different options including non-destructive white background removal.

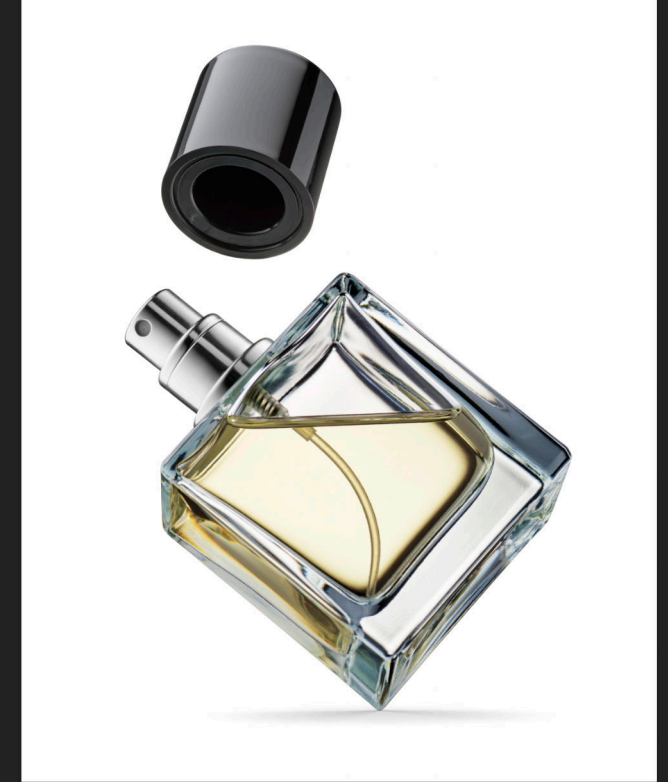
The Trim function is offered with macro variants that use 1%, 2%, 5% and 10% tolerance when sampling the top left corner of the image.

Additionally, I have also provided **Remove White Background** functions, available in both a live and non-destructive implementation, and in a destructive variant that also trims excess space around the remaining image data. These will generally be more effective at removing white background detail, and will do so in a non-contiguous fashion.



# Installation

1. Extract the *.afmacros* file to a directory of your choice.
2. In Affinity Photo, you will need to expose the **Library** panel. In V1, go to **View>Studio>Library**, or in V2 go to **Window>Library**.
3. Click the small icon at the top right of the **Library** panel and choose **Import Macros**.
4. Navigate to the directory containing the *.afmacros* file and select it, then click **Open** (or double click the file).
5. The **Library** panel will then be populated with the macros from that category. If you are installing any other macro packs, repeat the process for those categories.



Above: original image. Below: Image after trim.

# Further Instructions

When applying the Trim macros, the order of the layer stack is unimportant: the document will be flattened before background removal and trimming.

The Trim & Fill variants will also add a non-destructive solid white fill layer beneath the content layer. You can use this to easily change the background colour.

If you have a pixel or image layer selected when applying the Remove White Background (Live) macro, the live filter that removes the background will be child layered—this is good for compositing workflows. If you have a non-content layer selected such as an adjustment layer, the live filter will be added above, affecting everything below it.

After running Remove White Background (Live), you can click on the *Remove White Background* layer thumbnail to access the White Threshold slider: use this to configure the amount of white to remove if the effect is too strong and you are losing detail.

Remove White Background & Trim will use the same white background removal method as the live macro, but apply it destructively and then trim the document to the bounds of the remaining content. This could be more effective than the Trim macros for sketched images where the paper white is variable in brightness.

Remove White Background, Trim & Fill will do the same as above, but also add a non-destructive solid white fill layer—again, you can easily change the colour of this.

